

# Specification

Std Series-D8120-48V-10mm



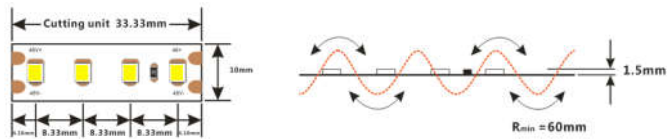
## General description

- ※Max.length is 30 meters driven by one end
- ※strips is of lower current with 48V input, better for longer wire connection
- ※ultra long application with less power feed, high cost efficiency for project system
- ※With life span over 36000H
- ※Ta: -25~60° C; Tc: 75° C (max)



## Dimensions

- Max.length:** 30,000mm(98.4')
- Cutting unit:** 4leds/33.33mm(1.31")
- LED pitch:** 8.33mm(0.33")
- Min. bend diameter:** Φ60mm(2.36inch)
- Mounting:** 3M tape
- IP:** IP33/IP65/IP67

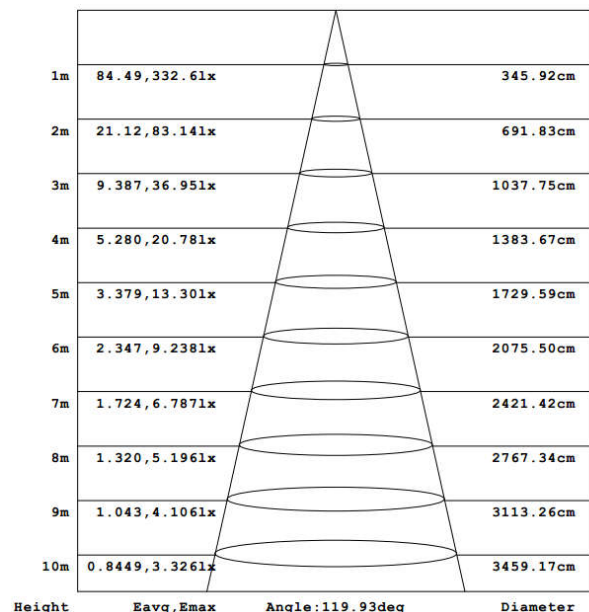
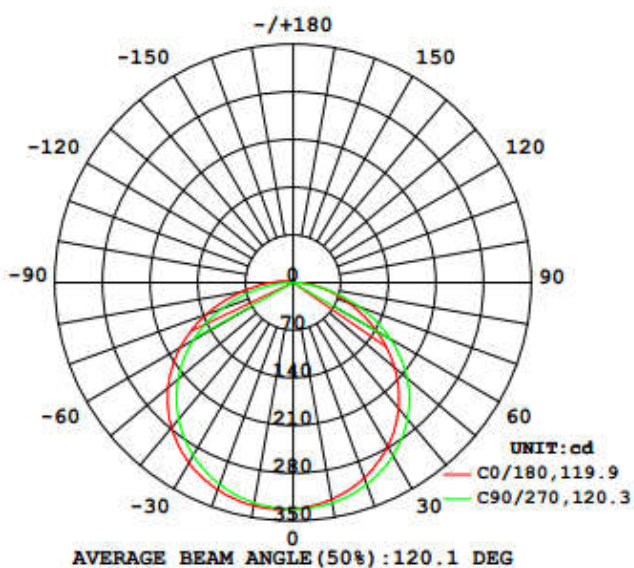


## Electronic & output data

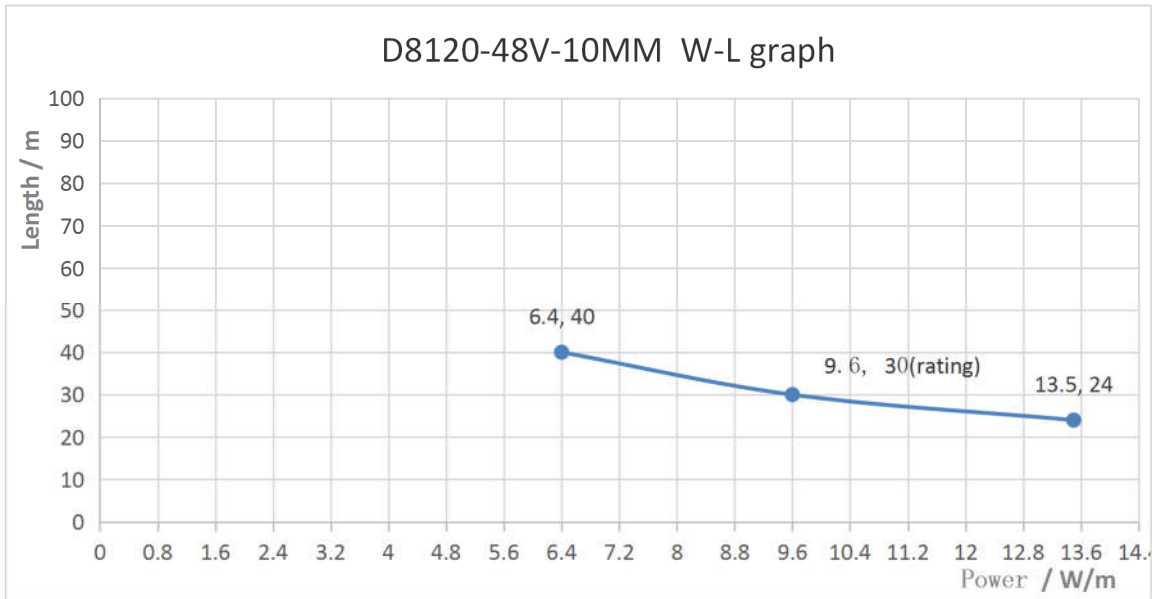
- Input voltage:** 48VDC
- Rated current:** 0.183A(1meter) /4.33A(30meters)
- Typical Power:** 8.8W(1meter) /207.8W(30meters)
- Power range:** 8~9.6W
- Max.power:** 9.6W
- CRI:** 80
- On-off times:** 10000 (test times)

Color	SW	WW	NW	DW	W
<b>CCT</b>	2700K	3000K	4000K	5000K	6000K
<b>Lumen</b>	970	995	985	985	970
<b>Lm/W</b>	110	113	112	112	110
<b>Energy efficiency class</b>	A+	A+	A+	A+	A+

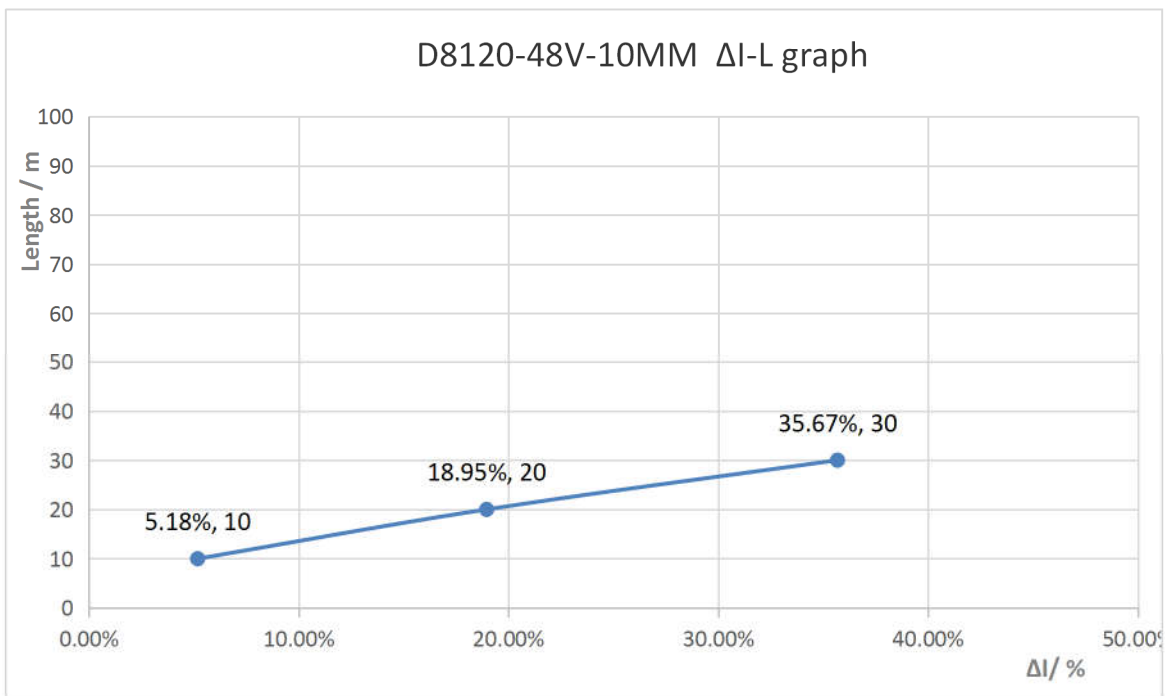
- 1.The tolerance of output data can be vary up to 10%
- 2.the output data tested according to IES TM-30-15
- 3.the output data is based on IP33/1meter
- 4.IP protection process leads changes to size, CCT and luminous flux

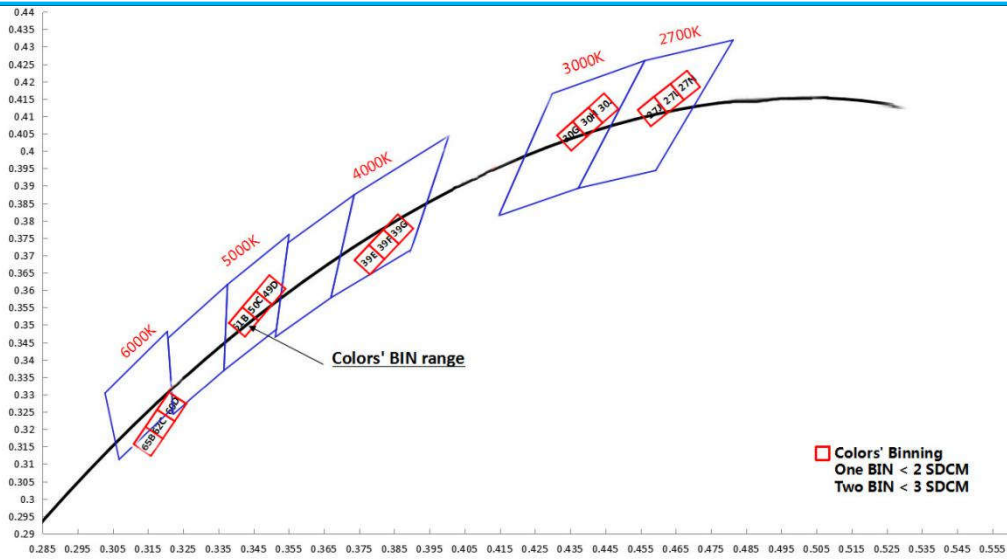


**W-L graph: The power less than the rating can be customized**



**$\Delta$  I-L graph: 9.6W/m**



**BIN**

**Accessories Information**

Type	Name	Picture	Code	Color	protection technique	Remark
Wire and cable with connector	red and black cable		94.31.20181201 (head) / 94.31.20181202 (tail)	red/black	NO/ET//EF/EH	18AWG L=120mm
	Two core SM-male wire		94.34.20182101	red/black	NO	18AWG L=210mm
	Two core SM-female wire		94.34.20182102	red/black	NO	18AWG L=210mm
	Two core DC-male wire		94.35.22182101	black	NO	18AWG L=210mm
	Two core DC-female wire		94.35.22182102	black	NO	18AWG L=210mm
	Two core Lucid wire		94.32.20182001	transparent	NO/NA	18AWG L=200mm
	Two core Lucid-male wire		94.35.23182401	transparent	NO	18AWG L=240mm
	Two core Lucid-female wire		94.35.23182402	transparent	NO	18AWG L=240mm
Connector for wire and wire	single pin,"-"shape wire connector		94.51.110000005	Transparent /black	-	Wire Diameterer< 2.1mm
	single pin,"T"shape wire connector		94.51.110000003	Transparent /black	-	Wire Diameterer< 2.1mm
	double pin,"-"shape wire connector		94.51.110000006	Transparent /black	-	Wire Diameterer< 2.1mm
	double pin,"T"shape wire connector		94.51.110000004	Transparent /black	-	Wire Diameterer< 2.1mm
	double pin,"Y"shape wire connector		94.51.110000001	white	-	-
	double pin,"-"shape wire connector		94.51.110000002	transparent /black	-	Wire Diameterer< 2.1mm
Solder free terminal	Connector for wire and FPC		94.42.621020003	transparent	NO	-
	Connector for FPC and FPC		94.42.621020004	transparent	NO	-
Fixed Clip	10mm Tube clamps		94.19.01100004	transparent	NO	-



DC48V Switching power supply (non-waterproof)	100W 48V constant voltage power supply		LRS-100-48	/	NO	MEAN WELL POWER SUPPLY
	200W 48V constant voltage power supply		LRS-200-48	/	NO	MEAN WELL POWER SUPPLY
	350W 48V constant voltage power supply		LRS-350-48	/	NO	MEAN WELL POWER SUPPLY
DC48V Waterproof electronic LED driver	100W 48V constant voltage power supply		ELG-100-48A	/	ET//EF/EH	MEAN WELL POWER SUPPLY
	200W 48V constant voltage power supply		ELG-200-48A	/	ET//EF/EH	MEAN WELL POWER SUPPLY
	320W 48V constant voltage power supply		HLG-320H-48A	/	ET//EF/EH	MEAN WELL POWER SUPPLY

## Order Code Formats

1:Category		2:LED		3:LED/m		4:Voltage		5:FPC Width		6:IP Process		7:CRI		8:CCT	
D	-	8	2835	120	120 LED	48	48V	10	10mm	NO	NO	8	> 80	SW	2700K
										ET	Extrusion Tube			WW	3000K
										EH	Dual-color Extrusion Tube			NW	4000K
										EF	Extrusion Full			DW	5000K
														W	6000K

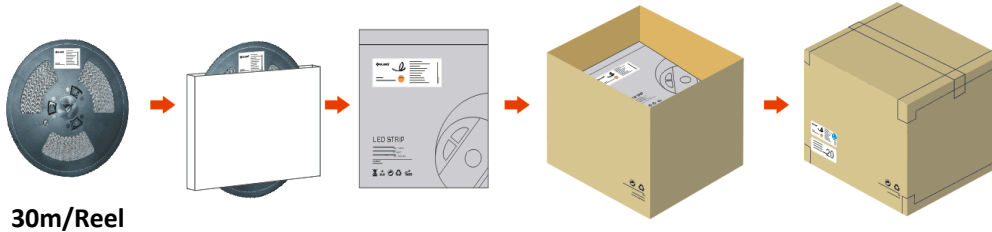
9:Silk Printing		10: Entry cable		11:Wire type		12:Wire length		13:Tape type		14:Label Type		15: Strip Length	
C	COLORS	S	Single	A	red and black cable	012	12cm	W	White 3M	C	COLORS	0050	0.5m
S	customized	D	doubel	B	SM-male wire	015	15cm	Y	Yellow 3M	S	customized	0100	1m
N	Neutral	X	Nothing	C	SM-female wire	020	20cm	X	Nothing			0500	5m
				X	Nothing	050	50cm					3000	30m
						000	Nothing						

**D81204810NO-8XXNDA012WC3000**

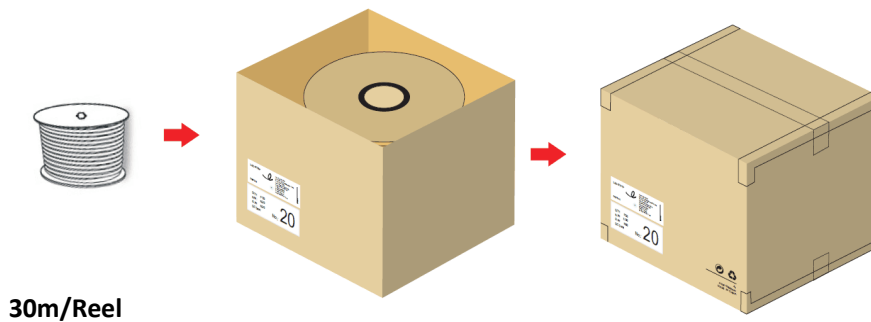


## Packing

### 1. Conventional packaging of NO(IP33)/NA(IP65).



### 2. Conventional packaging of ET/EH/EF(IP67)



## Disclaimer

- ※ Please drive the led strip with 48VDC isolated power, and the ripple of the constant voltage source should be less than 5%.
- ※ Please do not bend the strip into an arc with a diameter less than 60mm to ensure the longevity and reliability.
- ※ Do not fold it in case any damage of LED beads.
- ※ Do not pull the power wire hard to ensure the longevity. Any Crash may damage the LED light is prohibited.
- ※ Please make sure the wire is connected to the anode and cathode correctly. The power output should be consistent with the voltage of the strip to avoid damage.
- ※ LED lights should be stored in dry, sealed environment. Please only unpack it before usage. Ambient temperature:  $-25^{\circ}\text{C}\sim 60^{\circ}\text{C}$ . Storage temperature:  $0^{\circ}\text{C}\sim 60^{\circ}\text{C}$ . Please use the strips without waterproof within indoor environment with humidity less than 70%.
- ※ Please be careful during operation. Do not touch the AC power supply in case of electric shock.
- ※ Please leave at least 20% power for the power supply during using to ensure there is enough power supply to drive the product.
- ※ Do not use any acid or alkaline adhesives to fix the product (e.g.: glass cement).

